

TILE TODAY

FULLY ENDORSED BY THE AUSTRALIAN TILE COUNCIL

120

TILE LEVELLING SYSTEMS

UNLOCK: A SAFE WAY TO MIX

**CLEARTILE CUSTOMISED
FOR THE TILE INDUSTRY**

TILE

TODAY

120

CONTENTS

SURFACES

- 6** All-Over tile production technology allows the texture of the ceramic slab to be reproduced on the edge. Exclusive to Italian manufacturer Fondovalle.

RLA POLYMERS

- 8** The company's "Respirable Silica Free" technologies are available at a time when there is an increased awareness of silicosis in the tile industry.

PRODUCT FOCUS: ULOCK

- 10** The uLock mixing system is a pail, platform and lid that supports the safe mixing of all powder products. Designed and engineered in Australia.

TILE LEVELLING SYSTEMS

- 12** In this feature, we explore the history and developments of tile levellers, and provide a product overview for installers.

WOOD-EFFECTS TILES

- 24** Ceramiche Refin's Tamashi range is inspired by timber and designed for contemporary architectural settings.

PROFILE

- 26** Clear Software has been providing software solutions for the tile industry for a long time. We find out how it began and speak to a few key customers, Designer Stone Solutions and Wyllie Tiles.

PORCELAIN TILES

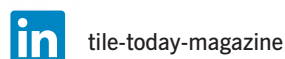
- 30** Colors from Ceramica Rondine is a range of indoor porcelain stoneware wall tiles that won a 2023 Archiproducts Design Award.

PRODUCT FOCUS: EPEGROUT

- 32** EpegROUT by Dribond Construction Chemicals is a three-component, water-washable, chemical resistant, epoxy tile grout for joints up to 3mm.

WHAT YOU MISSED

- 34** If you missed any major stories in Tile Today's e-newsletters, we provide direct links to them on the website.



Minimalist yet rich in natural details

Tamashi – soul in Japanese – by Ceramiche Refin is a new collection of wood-inspired porcelain tiles that are inspired by contemporary natural woods currently widely used in furnishings

The result of intense research to find the ideal graphic and colour balance, the collection offers uniform, balanced surfaces characterised by fine, dense, parallel veins and subtle colour nuances, according to the manufacturer.

The selection features seven shades and available in 25 x 150cm planks.

To create Tamashi, Ceramiche Refin said it worked on reduction, with the aim of gaining the essence of wood. An image of cleanliness comes from the absence of knots and the choice of dense, fine and regular veins, resulting in a seamless, linear and fluid surface. The result is a modern and natural simplicity that stems from a skilful graphic and colour balance.

The palette expands from the traditional woods to include seven colours that it studied — ranging from light to dark — to give the collection a new modernity. The evocative names chosen for the shades – Sugar, Vanilla, Cream, Tea, Walnut, Caviar, Pepper — convey pleasant sensations. Tamashi is offered in the classic board size that is updated to provide rooms with a level of elegance while retaining all the charm of the wood material.

The Leaf decoration is available in the 60x60 cm size and in three colour combinations: Leaf Tea (Cream+Tea), Leaf Walnut (Vanilla+Walnut), Leaf Pepper (Sugar+Pepper). Depending on its rotation direction, the arch pattern can create multiple geometries to give rhythm to both floor and wall surfaces.

Colour shading

The slight chromatic variation and the veining of the product is an intrinsic feature to re-create the randomness and richness of the colour shading of natural stones to which the collection is inspired. For these reasons,

Ceramiche Refin recommends installing the product by choosing tiles from different boxes in order to guarantee a variable and random effect of the finished surface. Due to these

→ 25



→ intrinsic features of the product, the colours represented in the images from the catalogue must only be considered an example of the many possible colour shades.

The company

As part of Gruppo Concorde, Ceramiche Refin has been a presence on the international market since 1962 with a broad range of porcelain stoneware solutions for residential and project-planning destinations. Refin is part of the Gruppo Concorde, a leading ceramic group at global level.

It has a constant commitment towards aesthetic research and technological innovation when it develops its collections. This has helped the company achieve product and production excellence.

Refin designs and produces porcelain stoneware in-house and only in Italy, running a company that is based on the pursuit of quality and on respecting the environment.

Ceramiche Refin produces more than 7 million m² of tiles per year, supported by the latest machinery for the creation of surface graphics and post-manufacturing processes. All the phases of its production undergo strict quality control procedures and the standards of its products are certified by the key international certifications. ■

